

THE ALPINE ESTATE
—◇—
VERBIER

THE ALPINE ESTATE

— ◆ —
VERBIER



◆ Verbier, Switzerland
◆ Indoor hot tub

◆ Sleeps 20 + 2
◆ Wellness Spa

◆ 2000 m2 of residence
◆ Dedicated cinema room

◆ Indoor pool
◆ Wine cave



THE ALPINE ESTATE IS ONE OF VERBIER'S MOST EXTRAORDINARY RETREATS. CHALETS NORTE AND SIROCCO JOIN VIA AN OUTDOOR COURTYARD TO SLEEP 20 PEOPLE IN TEN DELUXE EN-SUITES.



This magnificent estate is perched high above Verbier, providing unparalleled views of the village below and a majestic panorama of the mountains that surround this world-famous ski resort. With over 1,500m² of residence, the estate ensures you can immerse yourself in complete relaxation and offers one of the most luxurious in-chalet spa experiences in the Alps. There are two swimming pools, waterfalls, indoor and outdoor hot tubs, saunas, hammams, a private gym and numerous treatment rooms where expert pampering can be provided in complete privacy.



THE ALPINE ESTATE IS VERBIER'S MOST EXTRAORDINARY LIFESTYLE RETREAT. OFFERING THE ULTIMATE IN-CHALET SPA EXPERIENCE, THESE TWO SUPERIOR LUXURY CHALETS NORTE AND SIROCCO OCCUPY AN IMPRESSIVE POSITION IN THE DREAMY HEIGHTS OF VERBIER.



Perched high on a platform, guests can experience unparalleled views of the village below and the majesty of the surrounding mountains from every angle.

With over 1,500m² of residence, the estate sleeps up to 20 people in ten deluxe en-suite bedrooms, all of which are individually designed and open out onto private balconies or terraces. Uniquely skilled craftsmen using traditional materials combined with the artistic vision of a leading interior designer have created a new definition of luxury.

Connected by a small courtyard, the estate ensures you can immerse yourself in complete relaxation and offers one of the most luxurious in-chalet spa experiences in the Alps. There are two swimming pools, waterfalls, indoor and outdoor hot tubs, saunas, hammams, a private gym, and numerous treatment rooms where expert pampering can be provided in complete privacy.

The well-equipped gym, with the latest high-tech fitness equipment, is situated in a plush modern interior and complemented by stunning views of the mountains to spur on your workout.

Every floor of this immense estate offers an experience guaranteed to keep you entertained. There are two impressive wine caves, cinema rooms, a games room, and many living areas complete with Crestron entertainment system and Wi-Fi broadband throughout the chalet. The dining table in Sirocco is the perfect setting for elegant dinners with friends and family, and can be extended to accommodate 20 people.

Guests will be looked after by a team of highly trained professionals, each selected for excellence in their field, attention to detail, and discretion.





FACILITIES



SPA



One of the most luxurious in-chalet spa experiences in the Alps, The Alpine Estate boasts two swimming pools, indoor and outdoor hot tubs, saunas, hammams, a private gym, and numerous treatment rooms where expert pampering can be provided in complete privacy.



LIVING SPACE



The living space is plentiful here and ideal for entertaining. With both chalets boasting beautiful open-plan living and dining areas, you can enjoy fabulous dinner parties, aperitifs by the fire or sunset après ski on the balcony with breathtaking views across Verbier.



HOME ENTERTAINMENT



Every floor of this immense estate offers an experience guaranteed to keep you entertained. There are two impressive wine caves, cinema rooms, a games room, and many living areas complete with a Crestron entertainment system.



LOCATION

PARKING

Indoor parking: 6

LOCATION

Located in the heights of Verbier, near the Sonalon restaurant.

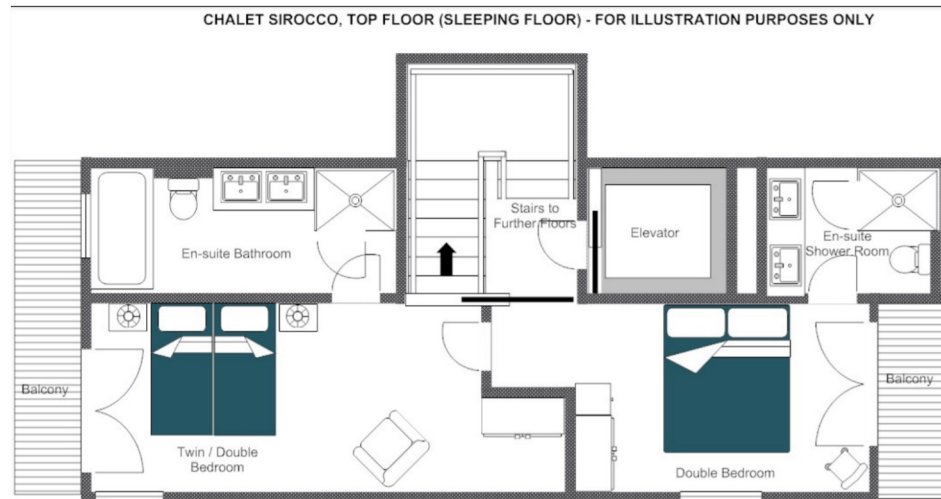
PROXIMITY

Medran - 5 minute drive; Savoleyres - 3 minute drive

Place Centrale - 7 minute drive



LAYOUT

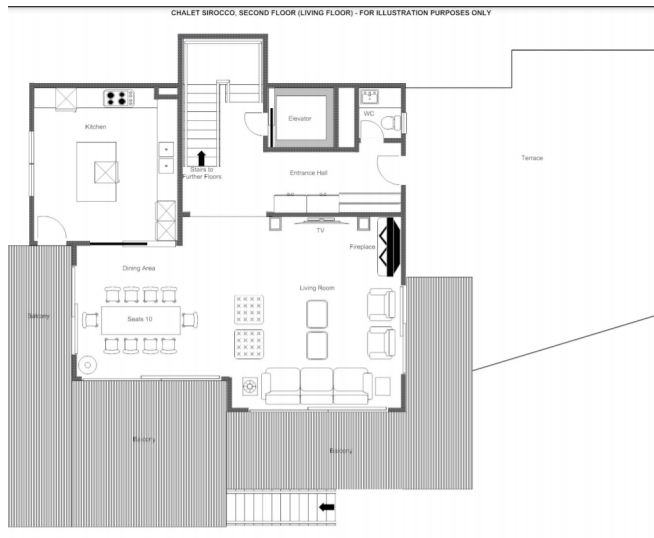


SLEEPING FLOOR (SIROCCO, TOP FLOOR)



- Twin/double bedroom (sleeps 2, en-suite bathroom, private balcony)
- Double bedroom (sleeps 2, en-suite shower room, private balcony)

LAYOUT

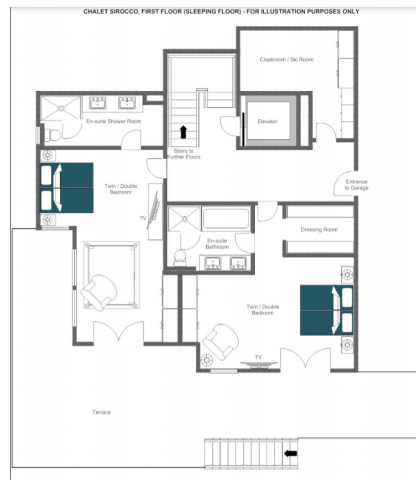


LIVING FLOOR (SIROCCO, 2ND FLOOR)



- Open plan living and dining area
 - Kitchen
 - Guest restroom

LAYOUT



SLEEPING FLOOR (SIROCCO, 1ST FLOOR)

- Twin/double bedroom (sleeps 2, en-suite shower room)
- Twin/double bedroom (sleeps 2, en-suite bathroom with separate shower)
 - Ski room
 - Garage entrance

LAYOUT



ENTERTAINMENT AND SPA FLOOR (SIROCCO, GROUND FLOOR)



- Cinema room
- Indoor swimming pool
- Indoor hot tub
 - Sauna
 - Hammam
 - Shower
- Massage room
- Relaxation area
 - Wine cave
- Small kitchen/bar area

LAYOUT

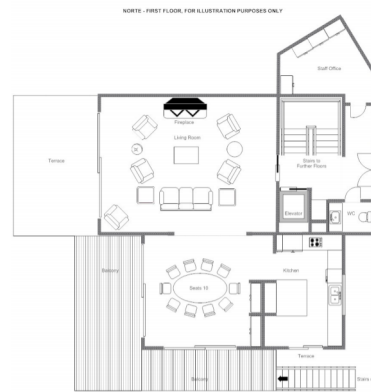


TOP FLOOR (NORTE)



- Master bedroom (sleeps 2, en-suite bathroom, dressing room, private balcony)
 - Private lounge area

LAYOUT



LIVING FLOOR (NORTE, 1ST FLOOR)



- Living room
- Dining area
- Kitchen
- Guest restroom

LAYOUT



SLEEPING FLOOR (NORTE, UPPER GROUND FLOOR)



- Double bedroom (sleeps 2, en-suite shower room, terrace access)
- Double bedroom (sleeps 2, en-suite shower room, terrace access)
- Double bedroom (sleeps 2, en-suite bathroom, terrace access)
- Twin bedroom (sleeps 2, en-suite bathroom, terrace access)
- Quad bunk bedroom (sleeps 4, en-suite shower room, terrace access)
 - Games room and lounge
- Staff apartment with kitchen facilities and en-suite shower room (sleeps 2)

LAYOUT



SPA FLOOR (NORTE, LOWER GROUND FLOOR)



- Indoor swimming pool
- Relaxation and lounge area
 - Outdoor hot tub
 - Sauna
 - Hammam
 - Showers
- Massage rooms
- Guest restroom



THE ALPINE ESTATE



VERBIER