

CHALET BIOLEY

SWITZERLAND

VERBIER

CHALET BIOLEY

VERBIER | Sleeps 10+3 [spa](#)



AN EXCEPTIONAL MOUNTAIN RETREAT focused on
high-end design, plush furnishings and beautiful vistas

DESCRIPTION



This chalet's impressive architecture and interior finish, coupled with its elevated position overlooking the mountains, make this property one of Verbier's finest. This stunning private home sleeps ten adults and three children in five bedrooms. Delight can be found in every detail from its exquisite coffee tables, elegant wicker arm chairs and luxurious sofas, accented with bold flashes of colour, intriguing artefacts and designer light fixtures.

Moving up to the second floor you will find the impressive open plan living and dining area, flooded with natural light and boasting glorious views from the floor to ceiling windows that open out onto the large balcony. This is an ideal space for entertaining and socialising. The living area is cosy, complete with large stone fireplace and enlivened with a contemporary finish including burnt orange, teal and aqua blue hues. A sumptuous L-shaped sofa is the ideal spot to find yourself, on a snowy winter's evening, warm drink in hand, in front of the roaring fire. With the press of a button, a large flat screen TV is revealed which comes equipped with Apple TV, Netflix and International TV channels. The chalet is fully equipped for sound and is home to a state-of-the-art Bose sound system which can be linked to Bluetooth to stream your own playlists.

FACILITIES



INTERIOR

- Sleeps 10 + 3
- 600 Square metres
- 5 Bedrooms
- 11 Individual beds
- 5 Bathrooms
- 1 Additional WCs
- 10 Dining table seats
- 12 Living area seats

APPLIANCES

- Apple TV
- Cable TV
- Integrated sound system
- Wifi

WELLNESS AND RELAXATION

- Outdoor hot tub
- south-facing balconies
- Spa

ENTERTAINMENT

- Bar
- Wine cave

ADDITIONAL

- Cot/high chair available
- Family-friendly chalets
- Heated boot warmers
- Private laundry facilities
- Private ski locker
- Wood burning fireplace
- Indoor Parking: 3
- Indoor Parking: 1



LAYOUT



TOP FLOOR (THIRD FLOOR)

- 1 master double bedroom suite (en-suite bathroom and separate shower, sitting area, walk-in wardrobe, TV, balcony)

SECOND FLOOR (LIVING FLOOR)

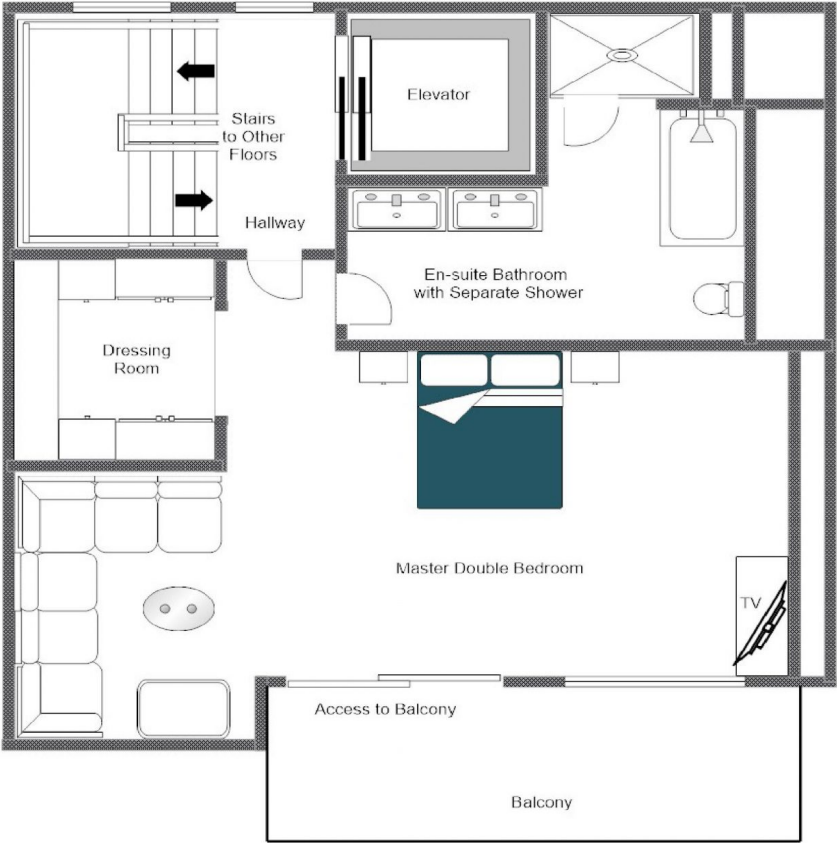
- Open plan living and dining room
- Kitchen
- Bar
- Guest WC

FIRST FLOOR (GROUND FLOOR)

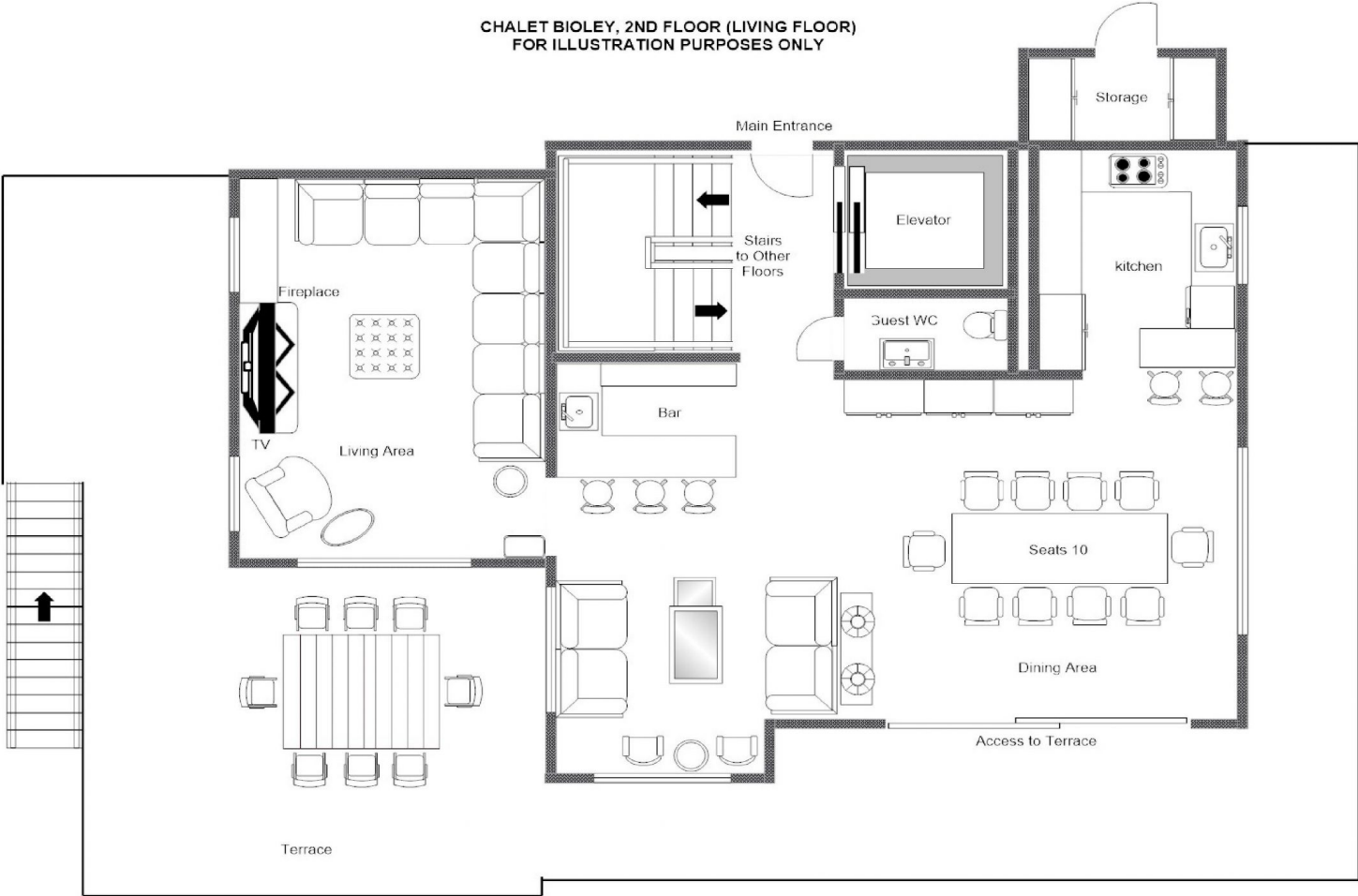
- 1 double bedroom (150 x 200 bed, en-suite shower room)
- 1 twin/double bedroom (en-suite bathroom, terrace access)
- 1 twin/double bedroom (en-suite shower room, terrace access)
- 1 family suite (1 twin/double bedroom and children`s triple bunk room, en-suite bathroom, terrace access)



CHALET BIOLEY, TOP FLOOR (THIRD FLOOR)
FOR ILLUSTRATION PURPOSES ONLY

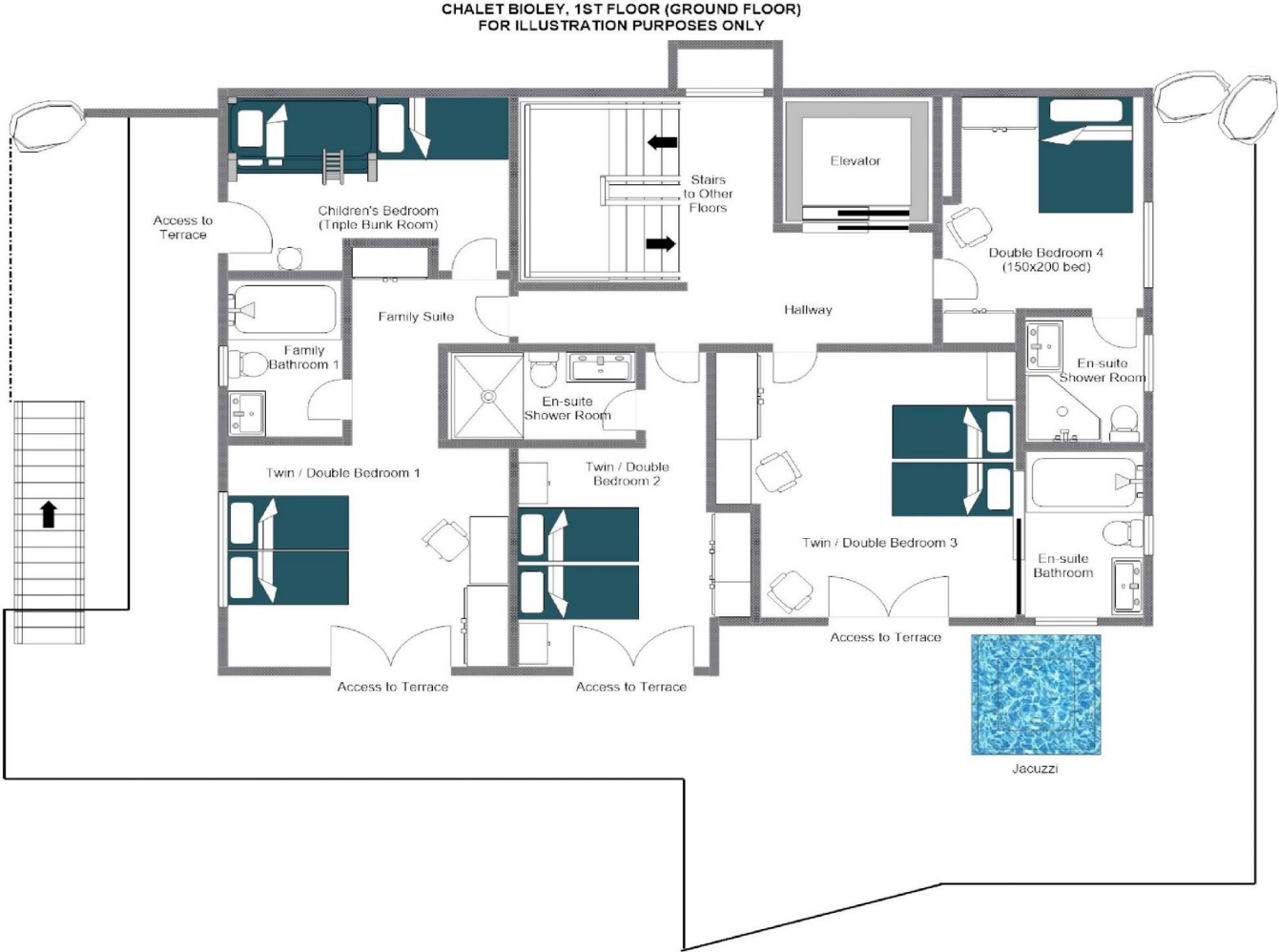






LOCATION





Perched in the heart of Verbier, Chalet Bioley is ideally positioned just a short walk from the Brunet bus stop and Le Rouge piste.

PROXIMITY

Médran - 4-minute drive Le Rouge piste - 7-minute walk

Place Centrale - 10-minute walk or 3-minute drive

GOOGLE CO-ORDINATES

46.101427, 7.225505



