

CHALECH S

---

AUSTRIA

LECH

# CHALECH S

LECH, AUSTRIA | Sleeps 12



CHALECH S, style and modern mountain living are epitomised in this brand new property



# DESCRIPTION



Brand new for the winter season 2019/20, Chalech is one of Lech's most exciting new developments. Chalech S is an elegant property, perfectly positioned only a stone's throw from the Schlosskopf piste and the centre of Lech.

This stunning mountain home sleeps 12 in six bedrooms, making it the ideal property for families or a group of friends. Every detail has been considered, from the ambient lighting to the calming colour palette and sumptuous fabrics. This attention to detail is prevalent throughout this spectacular mountain home. Each bedroom is decorated with its own colour scheme and the clever blending of traditional materials with modern style combine to form a highly sought-after property.

The chalet spans four floors and there is both an elevator and stairs linking all the floors of the chalet. Entering on the ground floor, you will find the tranquil spa. Decorated in cool neutral tones, with a sauna, hammam and relaxation area, the spa is the perfect spot to rest and relax after a long day on the slopes. On this floor, you will also find two spacious twin/double bedrooms, one with an en-suite shower room and one with en-suite bathroom.

Taking the stairs up to the first floor, you will find the master bedroom suite. The impressive suite is not only spacious, but has everything you would expect from a luxury suite, including a walk-in wardrobe, seating area with plush velvet sofa, desk, balcony access and the tranquil bedroom area, again decorated with cool tones and sensitive lighting. The en-suite bathroom, with free standing bath and separate rain shower, elevates the room further. Also on this floor you find a further twin/double bedroom with en-suite bathroom and a cosy bunkroom, sleeping two, with en-suite shower room.

The top floor of the chalet is dedicated to the impressive open plan living and dining area and the kitchen. The striking central fireplace welcomes you into the room, creating a warm and relaxing atmosphere. The double height ceilings and windows make this already spacious room feel even more so. You are immediately drawn to the large glass sliding doors that lead out to the balcony where you can drink in the views across the village and beyond to the snow-cloaked mountains. The space has been decorated with sophisticated modern furniture with accents of navy blue. The dining table can seat 12 guests and is perfect for elegant dinners with family and friends. The large kitchen overlooks the dining space, stylish with its striking patterned tile floor, matt black doors and modern fixture. It is any keen cook's dream environment. There is also a snug TV room, that can be closed off from the main living space, perfect for children to retreat to while their parents enjoy dinner with their friends.

On the lower ground floor of the chalet, you will find ski and boot storage as well as a private laundry room.

The apartment will also have access to a luxurious shared swimming pool, tepidarium, gym and spa, shared with four other properties in the Chalech development.



# FACILITIES





## INTERIOR

- Sleeps 12
- 400 Square metres
- 6 Bedrooms
- 11 Individual beds
- 6 Bathrooms
- 2 Additional WCs
- 12 Dining table seats
- 8 Living area seats

## APPLIANCES

- Integrated sound system
- Satellite
- Sonos
- TV/DVD
- Wifi

## WELLNESS AND RELAXATION

- Hammam/steam room
- Sauna
- Shared access to gym
- Shared access to pool
- Spa

## ENTERTAINMENT

- TV room

## ADDITIONAL

- Cot/high chair available
- Heated boot warmers
- Private laundry facilities
- Shared ski locker
- Wood burning fireplace
- Family-friendly chalets
- Indoor Parking: 1
- Outdoor Parking: 0





# LAYOUT





## TOP FLOOR

- Open plan living, dining and kitchen
- TV room
- Guest WC

## FIRST FLOOR

- 1 twin/double bedroom (en-suite bathroom with separate shower)
- 1 master bedroom suite (sleeps 2, fixed double, en-suite bathroom with separate shower, seating area, walk in closet, private balcony)
- 1 bunk room (sleeps 2, en-suite shower room)

## GROUND FLOOR

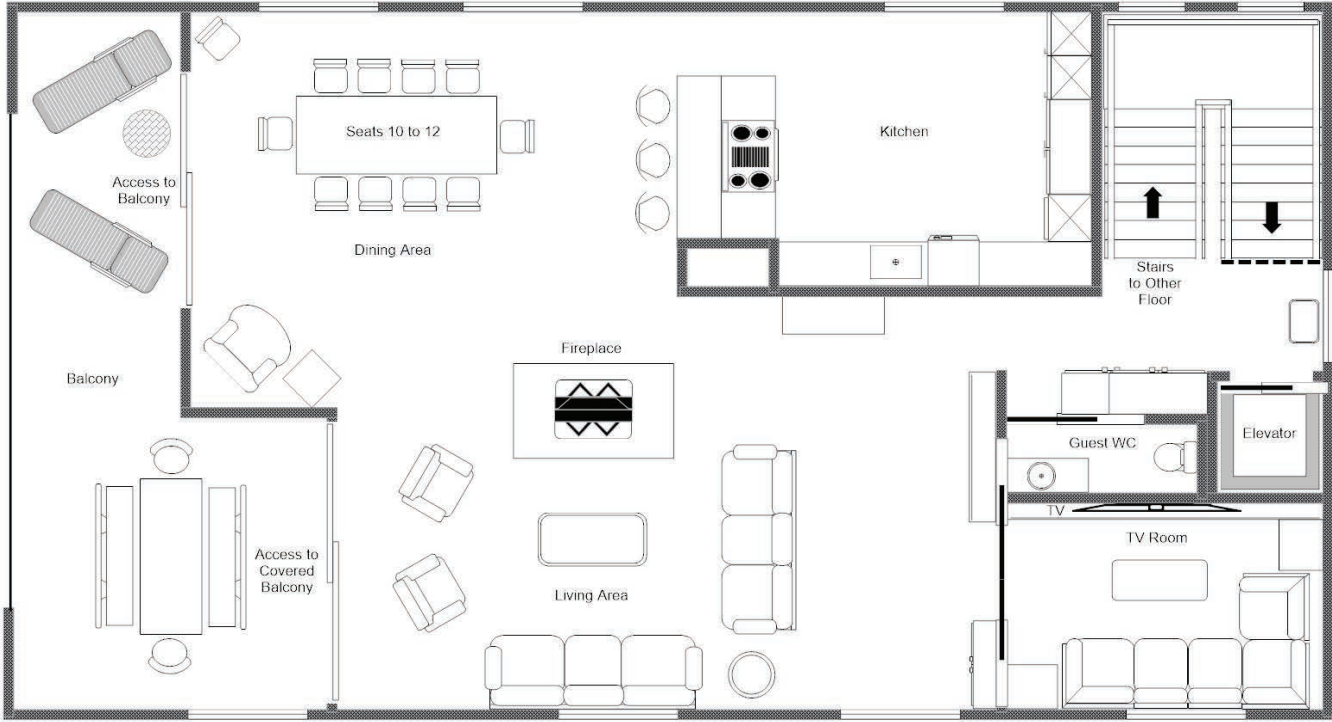
- 1 twin/double bedroom (en-suite shower room, terrace access)
- 1 twin/double bedroom (en-suite bathroom)
- 1 twin/double bedroom (en-suite shower room)
- Spa
- Hammam
- Sauna





FLOOR PLAN TOP FLOOR

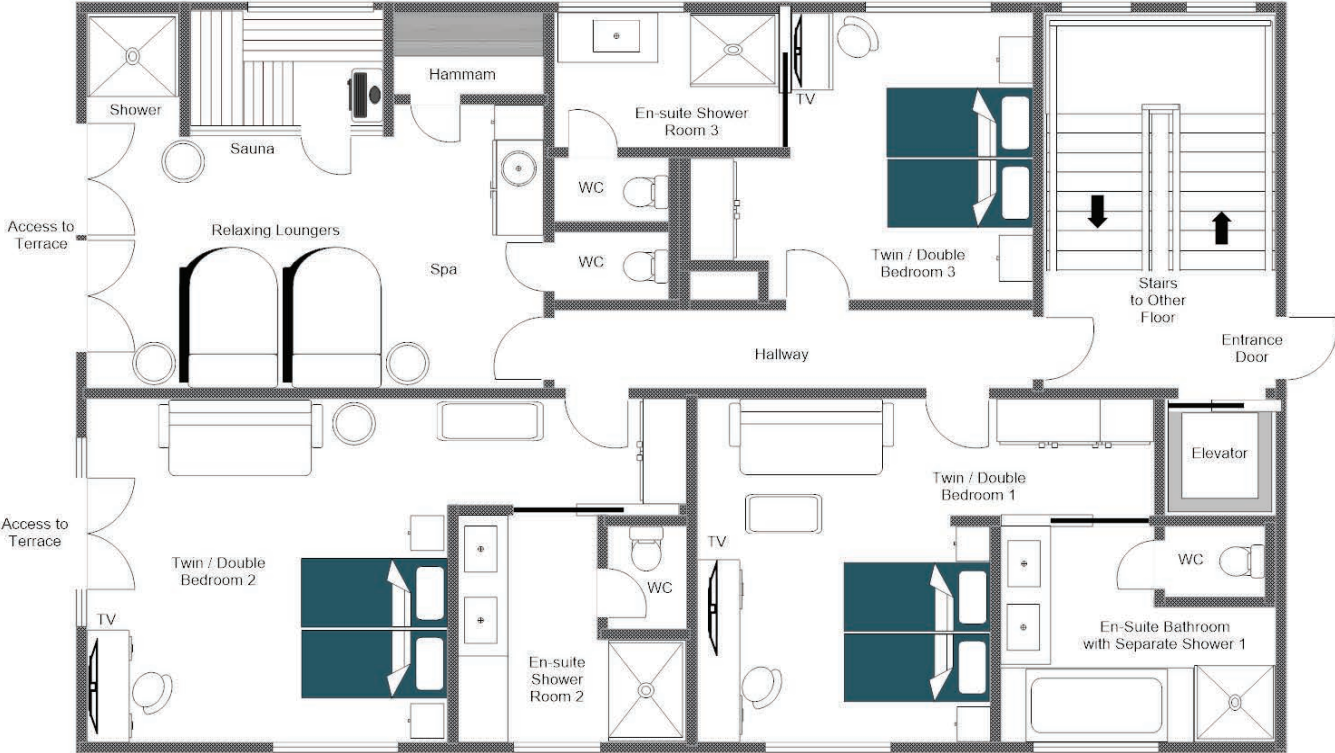
FOR ILLUSTRATION PURPOSES ONLY





FLOOR PLAN GROUND FLOOR

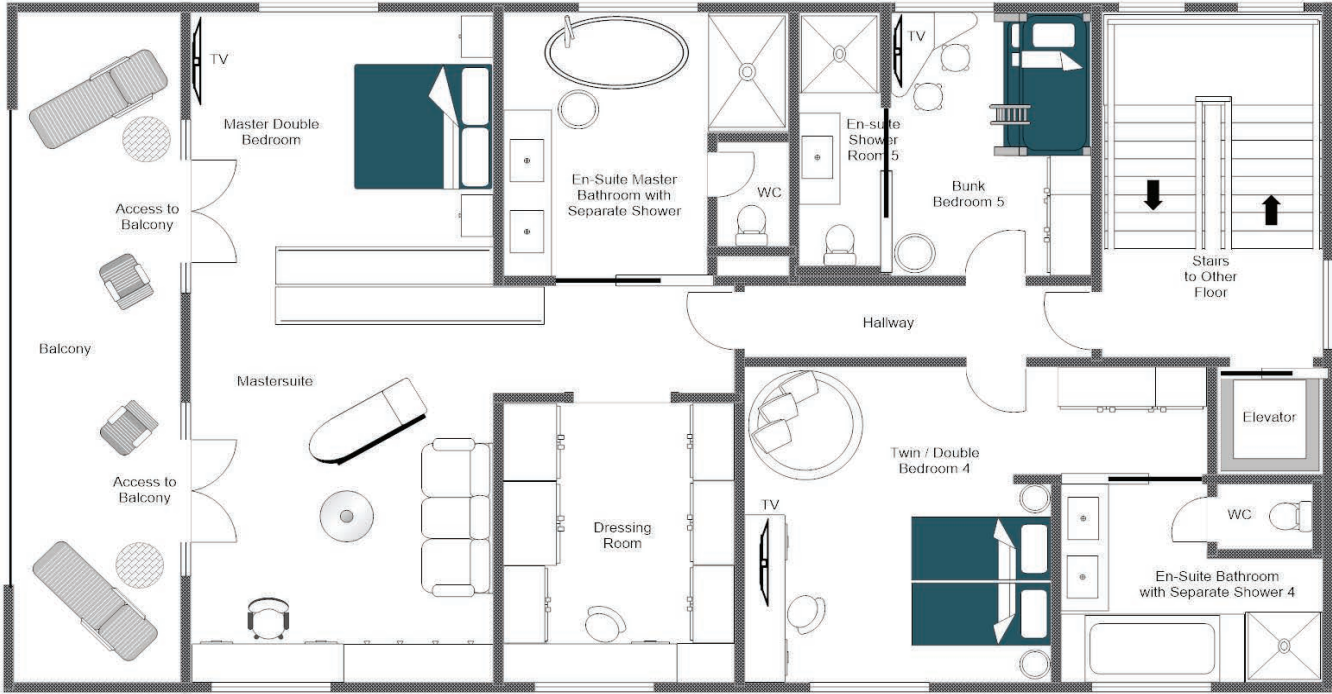
FOR ILLUSTRATION PURPOSES ONLY





FLOOR PLAN FIRST FLOOR

FOR ILLUSTRATION PURPOSES ONLY

















# LOCATION





#### ADDRESS

Lech, Austria

#### PROXIMITY

Schlosskopf chairlift - 3-minute walk

Schlegelkopf lift - 15-minute walk

Village centre - 10-minute walk or a 3-minute drive

#### GOOGLE CO-ORDINATES

47.214795, 10.147952





















