

BRUNNENHOF 9

AUSTRIA

LECH

BRUNNENHOF 9

LECH | Sleeps 6+2 spa



AN EXCEPTIONALLY STYLISH APARTMENT in a
fantastic location

DESCRIPTION



Brand new for 2019/20, the Brunnenhof residence is an exciting new addition to Lech's skyline. Home to 14 fabulous new luxury apartments, the building has undergone a complete renovation and all aspects have been refurbished with exquisite attention to detail. The residence also boasts luxurious shared facilities including an indoor swimming pool, spa, hammam and sauna. Combined with Lech's incredible skiing, glamorous restaurant and social scene, the Brunnenhof residence is the ideal base for an unforgettable stay in Lech.

Brunnenhof 9 is situated on the second floor of this impressive new development. Sleeping up to eight guests in three gorgeous bedrooms, this beautiful new apartment has everything you could wish for in a luxury alpine retreat. It is excellently located, only a six-minute walk from the Schlosskopf chairlift, which will take you up and onto the slopes in minutes, where you can enjoy Lech's world class skiing. Lech's charming centre is also only a ten-minute stroll away. There you will find no shortage of wonderful restaurants and a sophisticated social scene.

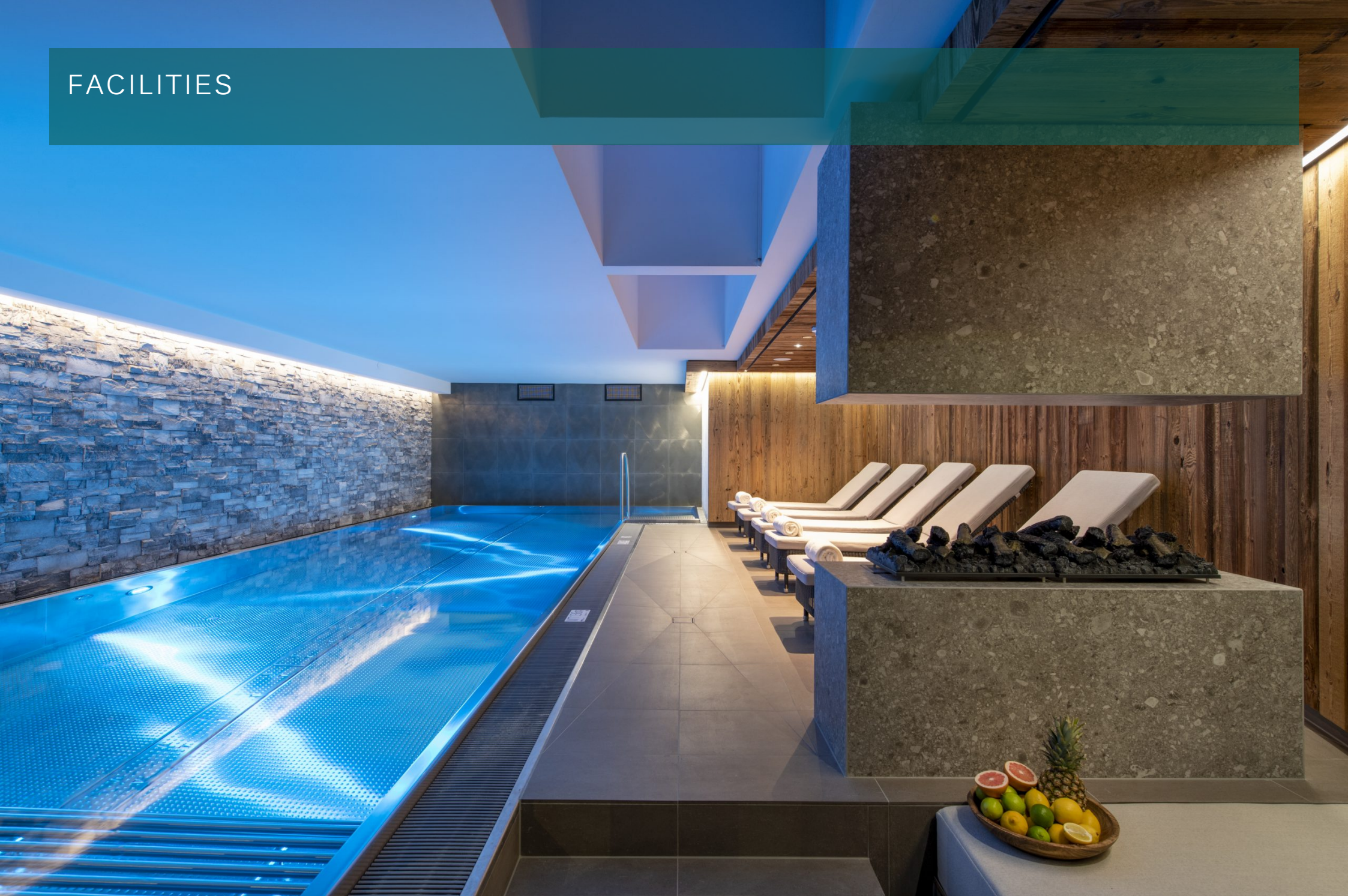
The apartment has an elegant open plan kitchen, living and dining area, perfect for entertaining with friends and family. The living space is elegant, yet comfortable and very welcoming. The stylish L-shaped sofa looks onto a warming electric fireplace which is also enjoyed from the dining table. Calming greys are punctuated by purple accents and the finishings are of the highest quality, creating a space that is rich with texture and delights in the small details. The décor has been meticulously selected and reflects a love of skiing and the mountains. The dining table seats up to eight people and is overlooked by the modern kitchen, well-equipped for preparing hearty breakfasts, ensuring everyone is ready for a long day on the slopes. Slow and cosy dinners will be enjoyed here too. The room is bathed in winter light through floor to ceiling windows that add to the apartment's inviting ambiance. Additional armchairs are being added to the living area for the 2021/22 season.

The sumptuous master bedroom has an en-suite bathroom with separate shower. There are a further two bedrooms, one double bedroom with en-suite shower room and one gorgeous bunk room, sleeping four in two purpose-built bunk beds with a spacious en-suite shower room. Both double bedrooms enjoy terrace access and all three bedrooms have been beautifully appointed with tasteful alpine-inspired décor.

The apartment comes with one parking space.

The apartment can be taken on a self-catered, BnB or accommodation only basis.

FACILITIES



INTERIOR

- Sleeps 6 + 2
- 98 Square metres
- 3 Bedrooms
- 6 Individual beds
- 3 Bathrooms
- 8 Dining table seats
- 4 Living area seats

APPLIANCES

- TV
- Wifi

WELLNESS AND RELAXATION

- Shared access to Hammam
- Shared access to pool
- Shared access to sauna
- Spa

ADDITIONAL

- Corporate chalets
- Cot/high chair available
- Family-friendly chalets
- Private laundry facilities
- Shared ski locker



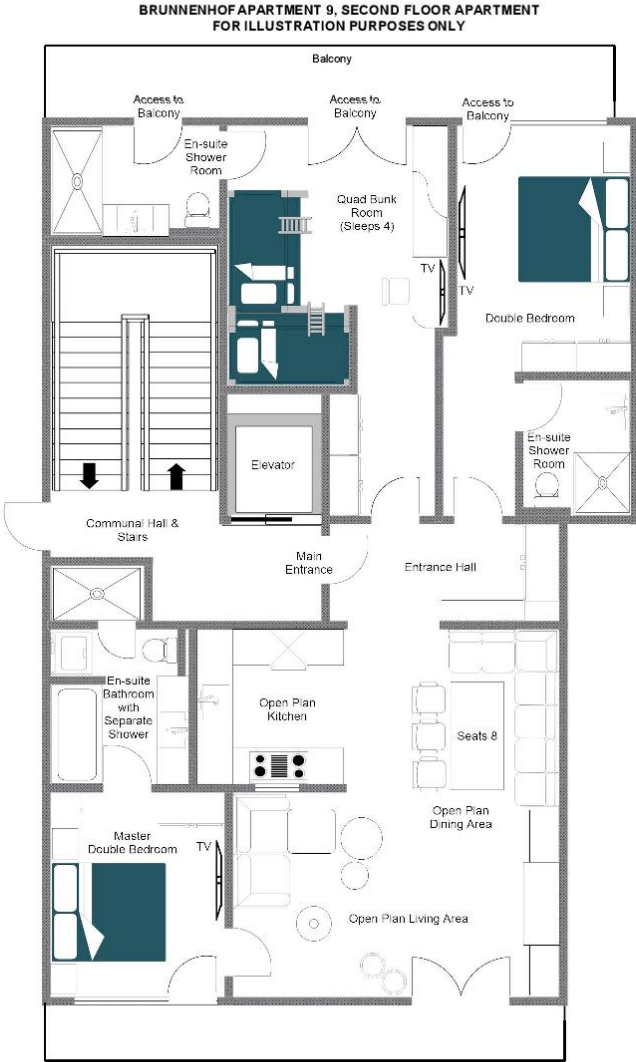
LAYOUT



SECOND FLOOR

- Open plan living, dining and kitchen
- 1 master bedroom (sleeps 2, en-suite bathroom with separate shower, terrace access)
- 1 double bedroom (en-suite shower room, terrace access)
- 1 bunk room (sleeps 4, en-suite shower room)









LOCATION



The Brunnenhof Residence sits only a 6-minute walk from the nearest ski lift and experienced skiers can back to within a few hundred metres of the property.

PROXIMITY

Schlosskopf chairlift - 6-minute walk
Schleggelkopf chairlift - 12-minute walk

Village centre - 10-minute walk or a 3-minute drive

GOOGLE CO-ORDINATES

47.215991 , 10.148279





