

BRUNNENHOF 7

---

AUSTRIA

LECH

# BRUNNENHOF 7

LECH | Sleeps 4 spa



NEW BEAUTIFUL CONTEMPORARY two-bedroom  
apartment offering sensational skiing on your doorstep



# DESCRIPTION





We are thrilled to introduce the brand new Brunnenhof residence, one of Lech's most exciting new developments. This beautiful five-story building is located near the centre of the charming village of Lech. The building has undergone a complete renovation over the last year and is now home to 14 fabulous new apartments. The residence also boasts excellent shared facilities, including an indoor swimming pool, spa, hammam, sauna and a treatment room.

Brunnenhof 7 is part of this incredible new development. Sleeping four guests in two stunning bedrooms, this second-floor apartment will undoubtedly prove a popular addition to our portfolio, ticking the boxes for style, convenience and location. The apartment is only a short walk from the nearest lift, the Schlosskopf chairlift, that can take you up to the slopes within minutes, where you will find world-class skiing in one of Europe's most snow sure resorts. When you return from the slopes you can revive tired limbs in the residence's stunning spa and swimming pool.

The light and spacious living area is the perfect spot to relax with a glass of bubbles and share stories from the slopes. A stylish grey L-shaped setée and a couple of ottomans mean there are ample options for everyone to relax and put their feet up. Decorated with warm tones and rich fabrics, and drawing on skiing images and paraphernalia from yesteryear to accent the room, this space is welcoming and homely yet modern and stylish. Floor to ceiling windows flood the room with nourishing winter sunshine. The sleek dining table comfortably seats six people and the well-equipped kitchen overlooks this area, creating a wonderful social space in which to cook and dine.

There are two stylish double bedrooms both with en-suite facilities. The master bedroom has an en-suite bathroom with separate shower and the second bedroom has an en-suite shower room.

Brunnenhof 7 is ideally located only a ten-minute walk from the centre of the village and a six-minute walk from the nearest lift. If you are an experienced skier, you can ski back to the apartment, as it is located only a few hundred metres from the piste. The apartment includes one parking space.

The luxury Lech apartment can be taken on a self-catered, BnB or accommodation only basis.

# FACILITIES





## INTERIOR

- Sleeps 4
- 96 Square metres
- 2 Bedrooms
- 2 Individual beds
- 2 Bathrooms
- 6 Dining table seats
- 6 Living area seats

## APPLIANCES

- TV
- Wifi

## WELLNESS AND RELAXATION

- Balcony
- Shared access to Hammam
- Shared access to pool
- Shared access to sauna
- Spa

## ADDITIONAL

- Corporate chalets
- Cot/high chair available
- Family-friendly chalets
- Shared ski locker





# LAYOUT





## SECOND FLOOR

- Open plan living, dining and kitchen
- 1 master double bedroom (sleeps 2, en-suite bathroom)
- 1 double bedroom (en-suite shower room)

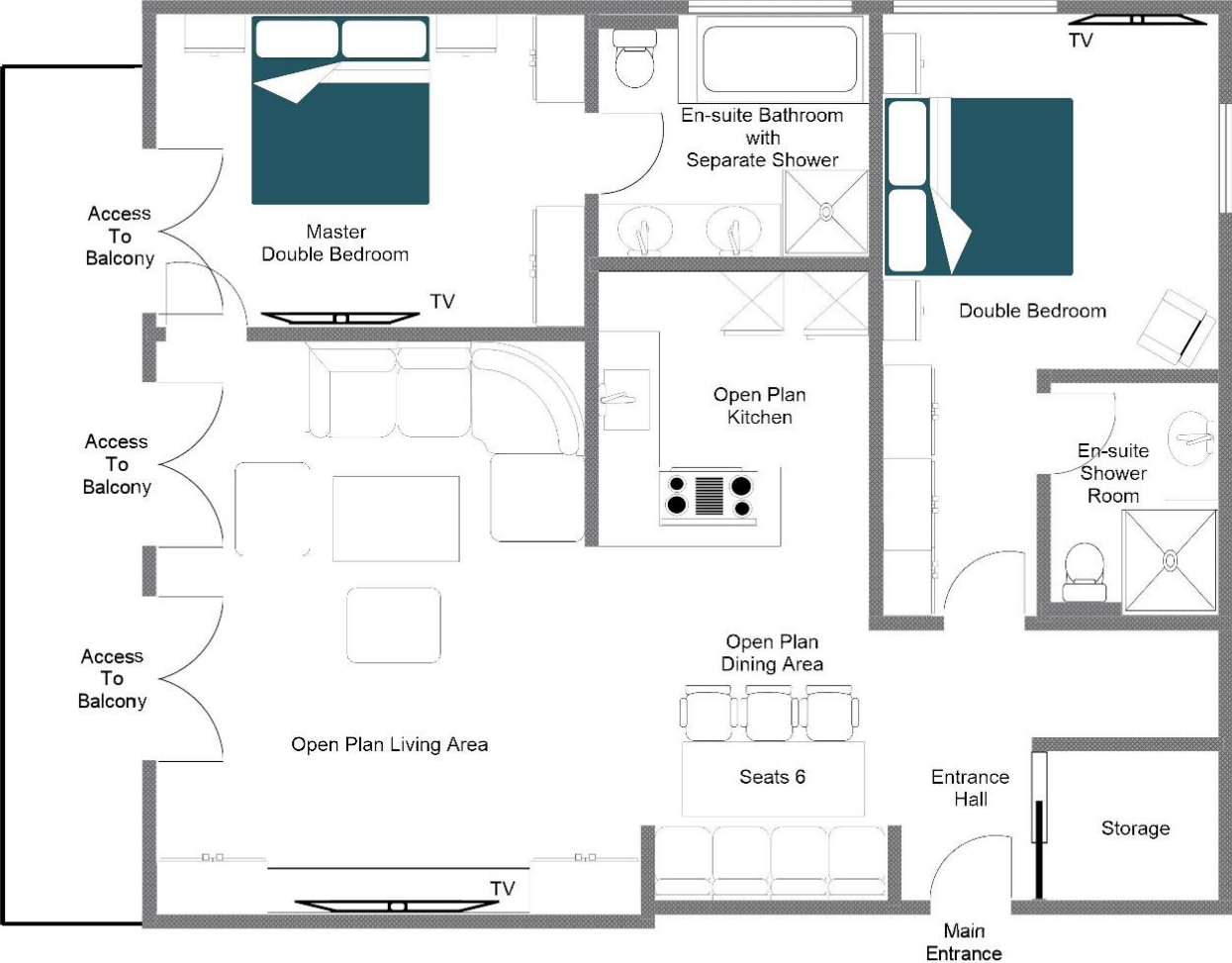








BRUNNENHOF APARTMENT 7, SECOND FLOOR APARTMENT  
FOR ILLUSTRATION PURPOSES ONLY









# LOCATION





Located just a short walk from the nearest ski lift and the centre of Lech, Brunnenhof 7 is ideally located for skiing and socialising.

#### PROXIMITY

Schlosskopf chairlift - 6-minute walk  
Schleggelkopf chairlift - 12-minute walk

Village centre - 10-minute walk or a 3-minute drive

#### GOOGLE CO-ORDINATES

47.215991 , 10.148279









